

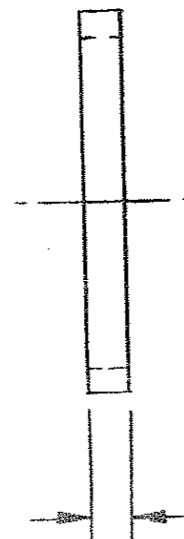
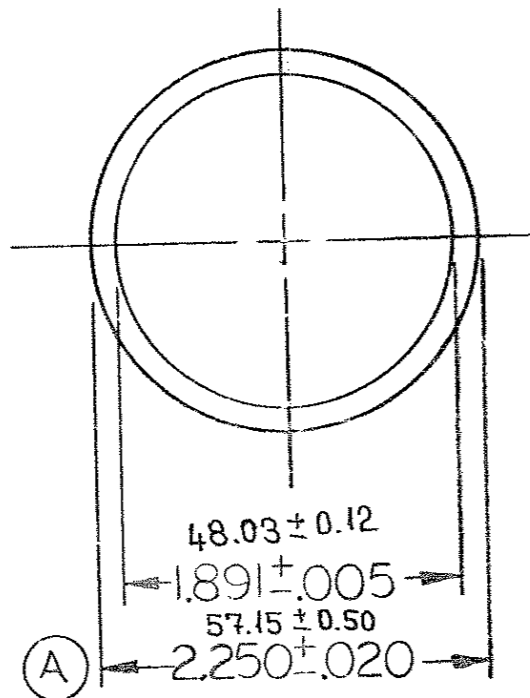
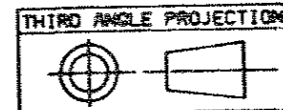
9572961

TOLERANCE ON ALL DIMENSIONS NOT  
SPECIFIED ON THE DRAWING TO BE IN  
ACCORDANCE WITH AI 2400

COUNTERSINK ALL TAPPED HOLES  
118° X ONE THREAD DEEP

BREAK ALL SHARP CORNERS  
UNLESS OTHERWISE SPECIFIED

SURFACE FINISH SPEC ARE IN  
ACCORDANCE WITH OM ENGR STDS



TB. 1220

Yar No	Sira No
	12445

5.94 ± 0.25  
234 ± 0.10

ENGINEERING APPROVAL  
OF SOURCE REQUIRED

				NO REQD	MATERIAL/NOTES		NAME OF PART		PART NO		ITEM NO
				MATERIAL EMS 644 GRADE 70		ELECTRO-MOTIVE A DIVISION OF GENERAL MOTORS CORP. LAGRANGE, ILLINOIS 60525, U.S.A.					
				DR Robert Humphries	DATE 20 DE 84	PART NAME GASKET - 1 1/4 FLANGE					
				CK		DESCRIPTION					
				SLP R. K.	11 JA 85	REF					
				WELD	MOD ENGR	FIRST USED ON EX 45390		PART NO 9572961			
				WAT Kamm	12-JA 85	GP49					
C19783	A	DIM. WAS 1.938	19 FEB 85	R.L.	SL						
RFC NO	REV LET	REVISION	DATE	BY	APVD						